



MIAMI-DADE COUNTY
BUILDING CODE COMPLIANCE OFFICE (BCCO)
PRODUCT CONTROL DIVISION

MIAMI-DADE COUNTY, FLORIDA
METRO-DADE FLAGLER BUILDING
140 WEST FLAGLER STREET, SUITE 1603
MIAMI, FLORIDA 33130-1563
(305) 375-2901 FAX (305) 375-2908
www.miamidade.gov/buildingcode

NOTICE OF ACCEPTANCE (NOA)

SMI-System by Pande Pane
11305 NW 128 Street
Medley, FL 33178

SCOPE:

This NOA is being issued under the applicable rules and regulations governing the use of construction materials. The documentation submitted has been reviewed by Miami-Dade County Product Control Division and accepted by the Board of Rules and Appeals (BORA) to be used in Miami Dade County and other areas where allowed by the Authority Having Jurisdiction (AHJ).

This NOA shall not be valid after the expiration date stated below. The Miami-Dade County Product Control Division (In Miami Dade County) and/or the AHJ (in areas other than Miami Dade County) reserve the right to have this product or material tested for quality assurance purposes. If this product or material fails to perform in the accepted manner, the manufacturer will incur the expense of such testing and the AHJ may immediately revoke, modify, or suspend the use of such product or material within their jurisdiction. BORA reserves the right to revoke this acceptance, if it is determined by Miami-Dade County Product Control Division that this product or material fails to meet the requirements of the applicable building code.

This product is approved as described herein, and has been designed to comply with the Florida Building Code, including the High Velocity Hurricane Zone.

DESCRIPTION: Series "SM-2/K-2 breeze" Single Outswing Aluminum Entrance Door w/wo SHW

APPROVAL DOCUMENT: Drawing No. **W03-62**, titled "Series SM-2/K-2 Breeze Alum Entrance Door (L.M.I.)", prepared by AL-Farooq Corporation, sheets 1 through 7 of 7, dated 08/07/03 and last revised on FEB 18, 2009, signed and sealed by Dr. Humayoun Farooq, P.E., bearing the Miami-Dade County Product Control revision stamp with the Notice of Acceptance number and expiration date by the Miami-Dade County Product Control Division.

MISSILE IMPACT RATING: Large and Small Missile Impact

LABELING: Each unit shall bear a permanent label with the manufacturer's name or logo, city, state and following statement: "Miami-Dade County Product Control Approved", unless otherwise noted herein.

RENEWAL of this NOA shall be considered after a renewal application has been filed and there has been no change in the applicable building code negatively affecting the performance of this product.

TERMINATION of this NOA will occur after the expiration date or if there has been a revision or change in the materials, use, and/or manufacture of the product or process. Misuse of this NOA as an endorsement of any product, for sales, advertising or any other purposes shall automatically terminate this NOA. Failure to comply with any section of this NOA shall be cause for termination and removal of NOA.

ADVERTISEMENT: The NOA number preceded by the words Miami-Dade County, Florida, and followed by the expiration date may be displayed in advertising literature. If any portion of the NOA is displayed, then it shall be done in its entirety.

INSPECTION: A copy of this entire NOA shall be provided to the user by the manufacturer or its distributors and shall be available for inspection at the job site at the request of the Building Official.

This NOA revises NOA # **08-0505.08** consists of this page 1 and evidence sheet E-1, as well as approval document mentioned above.

The submitted documentation was reviewed by **Ishaq I. Chanda, P.E.**

NOA No 09-0223.09
Expiration Date: December 04, 2013
Approval Date: April 08, 2009
Page 1



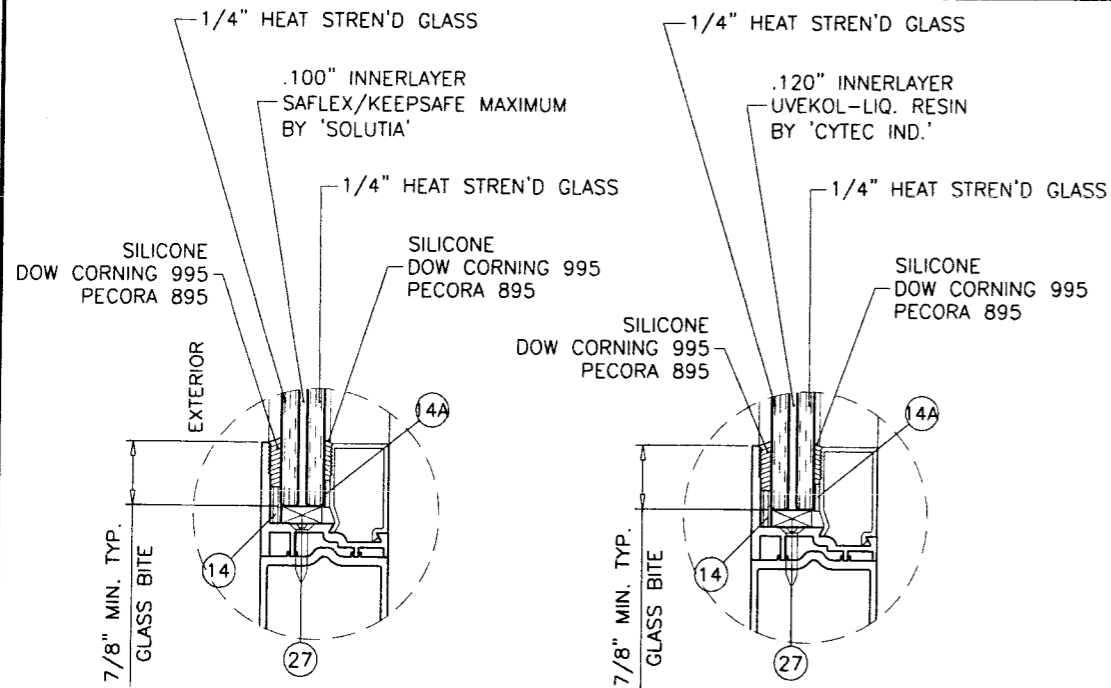
3/1/09

SMI-System by Pande Pane

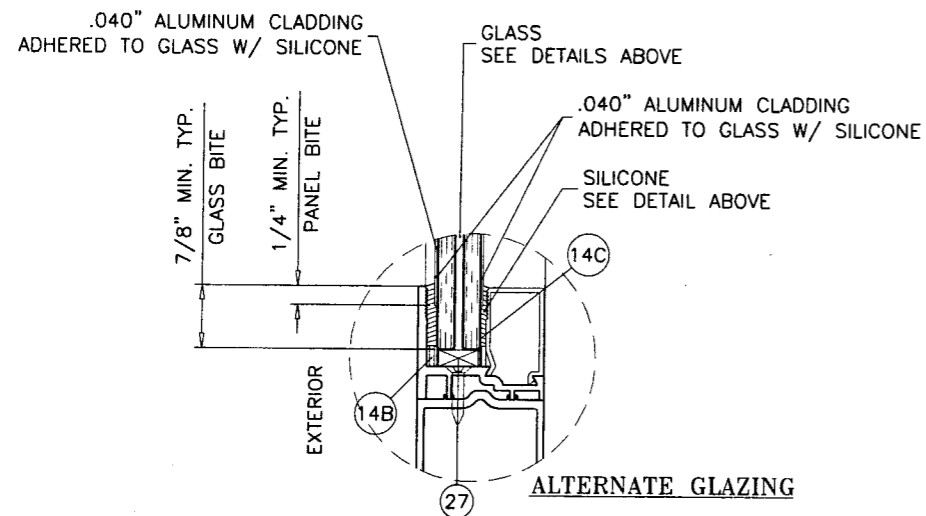
NOTICE OF ACCEPTANCE: EVIDENCE SUBMITTED

- A. DRAWINGS** (transferred from file # **08-0505.08**)
1. Manufacturer's die drawings and sections.
 2. Drawing No. **W03-62**, titled "Series SM-2/K-2 Breeze" Alum Entrance Door (L.M.I.)", prepared by AL-Farooq Corporation, sheets 1 through 7 of 7, dated 08/07/03 & last revised on FEB 18, 2009, signed & sealed by Dr. Humayoun Farooq, P.E.
- B. TESTS** (transferred from file # **08-0505.08**)
1. Test reports on 1) Air Infiltration Test, per FBC, TAS 202-94
2) Uniform Static Air Pressure Test, Loading per FBC TAS 202-94
3) Water Resistance Test, per FBC, TAS 202-94
4) Large Missile Impact Test per FBC, TAS 201-94
5) Cyclic Wind Pressure Loading per FBC, TAS 203-94
6) Forced Entry Test, Per FBC 2411 3.2.1 and TAS 202-94
along with marked-up drawings and installation diagram of a terrace door, prepared by Fenestration Testing Laboratory, Inc., Test Report No. **FTL-5406**, dated 04/18/08, signed and sealed by Carlos Rionda P.E.
 2. Test reports on 1) Air Infiltration Test, per FBC, TAS 202-94
2) Uniform Static Air Pressure Test, Loading per FBC TAS 202-94
3) Water Resistance Test, per FBC, TAS 202-94
4) Large Missile Impact Test per FBC, TAS 201-94
5) Cyclic Wind Pressure Loading per FBC, TAS 203-94
6) Forced Entry Test, Per FBC 2411 3.2.1 and TAS 202-94
along with marked-up drawings and installation diagram of a terrace door, prepared by Fenestration Testing Laboratory, Inc., Test Report No. **FTL-3824**, dated 06/19/03, signed and sealed by Joseph Chan, P.E. (transferred from file # **03-0925.02**)
- C. CALCULATIONS** (transferred from file # **08-0505.08**)
1. Anchor Verification Calculations and structural analysis, prepared by AL-Farooq Corporation, dated 04/23/08, signed and sealed by Dr. Humayoun Farooq, P.E.
 2. Complies with ASTM-E1300-02 & -04
 3. Statement letter of compliance to FBC 2007 dated April 24, 2008, prepared, signed & sealed by Dr. Humayoun Farooq, P.E.
- D. MATERIAL CERTIFICATION**
1. Notice of Acceptance No. **06-0216.06** issued to Solutia, for "Saflex IIIg clear & color interlayer", expiring on 05/21/2011.
 2. Notice of Acceptance No. **09-0310.02**(03-1223.04, Former Surface Specialties Tech) issued to Cytec industries Inc. for "Uvekol Laminated glass, expiring on 02/08/2010.
- E. QUALITY ASSURANCE**
1. Miami-Dade County Building Code Compliance Office.
- F. STATEMENTS**
1. Statement letter of conformance to FBC 2007 & No financial interest, dated April 24, 2008, prepared, signed & sealed by Dr. Humayoun Farooq, P.E.
 2. Laboratory compliance letter, part of above referenced test reports.
- G. OTHER**
1. This NOA **revises** NOA # **08-0505.08** expires on Dec 04, 2013.
 2. Test proposal # 07-3217 dated July 27, 2007 approved by BCD Ishaq I. Chanda

Ishaq I. Chanda, P.E.
Product Control Examiner
NOA No 09-0223.09
Expiration Date: December 04, 2013
Approval Date: April 08, 2009



GLAZING OPTIONS



ALTERNATE GLAZING

SERIES SMK-2/K-2 BREEZE ALUMINUM ENTRANCE DOOR

APPROVAL APPLIES TO SINGLE LEAF (X) DOORS WITH OR WITHOUT WINDOW INSERT.

SEE SEPARATE NOA FOR WINDOW CAPACITY.

LOWER DESIGN PRESSURES FROM DOOR OR SINGLE HUNG WINDOW APPROVAL WILL APPLY TO ENTIRE SYSTEM.

THIS PRODUCT HAS BEEN DESIGNED AND TESTED TO COMPLY WITH THE REQUIREMENTS OF THE FLORIDA BUILDING CODE 2004/2007 EDITION INCLUDING HIGH VELOCITY HURRICANE ZONE (HVHZ).

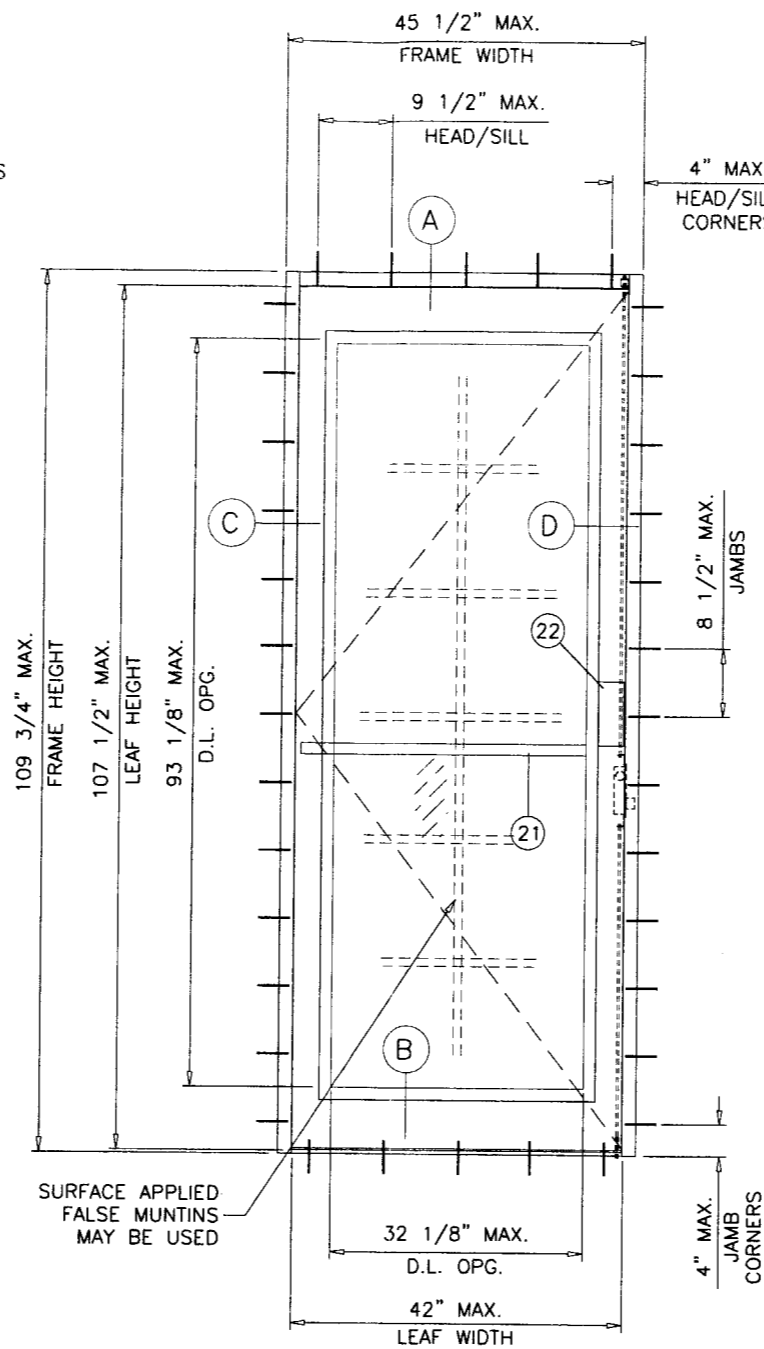
1BY OR 2BY WOOD BUCKS BY OTHERS, MUST BE ANCHORED PROPERLY TO TRANSFER LOADS TO THE STRUCTURE.

ANCHORS SHALL BE AS LISTED, SPACED AS SHOWN ON DETAILS, ANCHORS EMBEDMENT TO BASE MATERIAL SHALL BE BEYOND WALL DRESSING OR STUCCO.

ANCHORING OR LOADING CONDITIONS NOT SHOWN IN THESE DETAILS ARE NOT PART OF THIS APPROVAL.

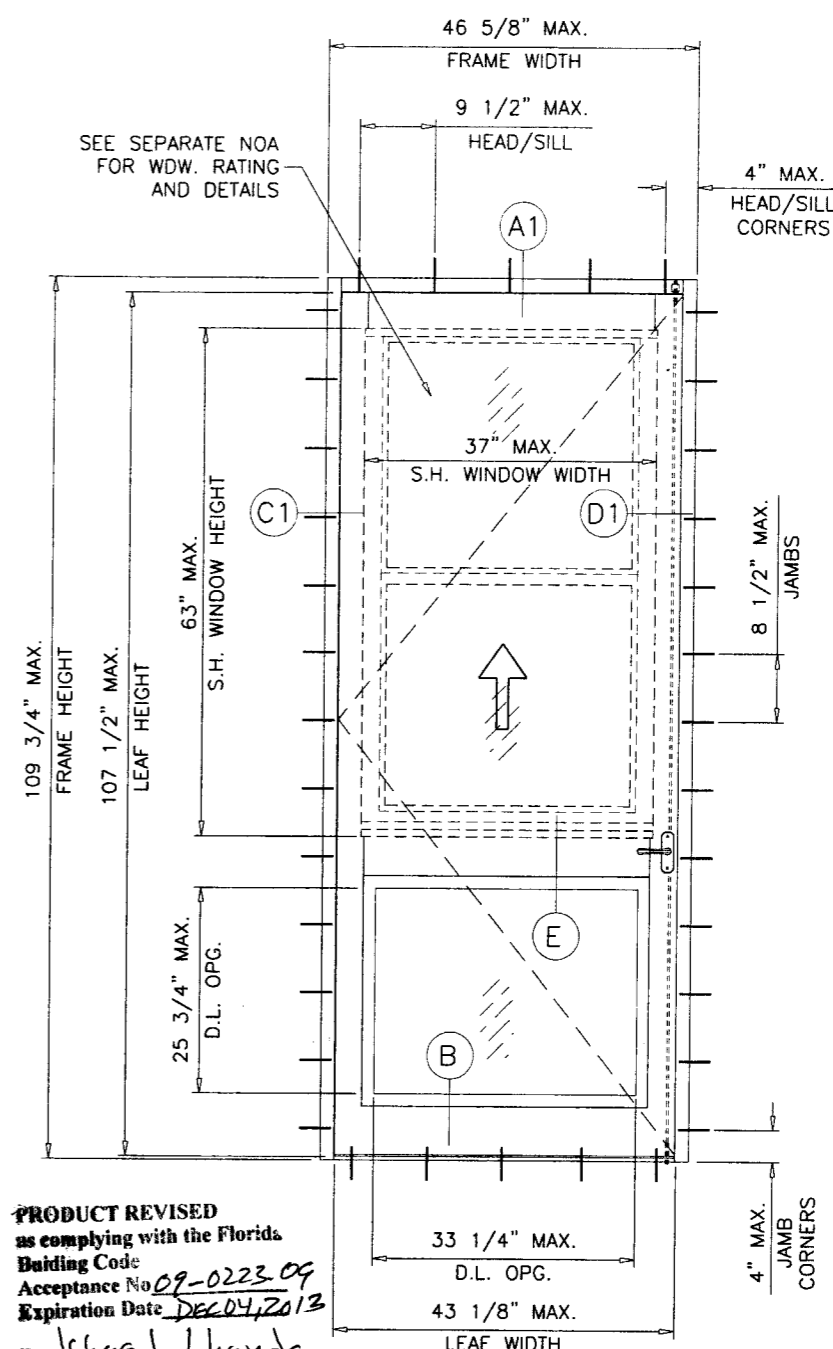
A LOAD DURATION INCREASE IN ALLOWABLE STRESS IS USED IN DESIGN OF ANCHORS INTO WOOD ONLY.

MATERIALS INCLUDING BUT NOT LIMITED TO STEEL/METAL SCREWS, THAT COME INTO CONTACT WITH OTHER DISSIMILAR MATERIALS SHALL MEET THE REQUIREMENTS OF 2004/2007 FLORIDA BLDG. CODE SECTION 2003.8.4.



TYPICAL ELEVATION

MAXIMUM DESIGN LOAD RATING = + 100.0 PSF
(FOR SIZES SHOWN ABOVE OR SMALLER) - 120.0 PSF
DOORS WITHOUT WINDOWS



TYPICAL ELEVATION

PRODUCT REVISED
as complying with the Florida
Building Code
Acceptance No. 09-0223 09
Expiration Date DEC 04, 2013
By Shag J. Chanda
Miami Dade Product Control
Division

MAXIMUM DESIGN LOAD RATING = + 90.0 PSF *
(FOR SIZES SHOWN ABOVE OR SMALLER) - 120.0 PSF
DOORS WITH WINDOWS

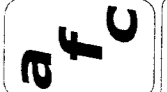
* LOWER RATING OF SINGLE HUNG WINDOW OR SINGLE DOOR SHALL CONTROL

THESE DOORS ARE RATED FOR LARGE MISSILE IMPACT.
SHUTTERS ARE NOT REQUIRED.

NOTE:
GLASS CAPACITIES ON THIS SHEET ARE
BASED ON ASTM E1300-02/04 (3 SEC. GUSTS).

Engr. DR. HUMAYOON FAROOQ
STRUCTURES
FLA. PE # 16557
C.A.N. 3538

FEB 18 2009



AL-FAROOQ CORPORATION
ENGINEERS & PRODUCT DEVELOPMENT
1235 S.W. 87 AVE
MIAMI, FLORIDA 33174
TEL. (305) 264-8100 FAX. (305) 262-6978
COMP-ANL\W03-62SM

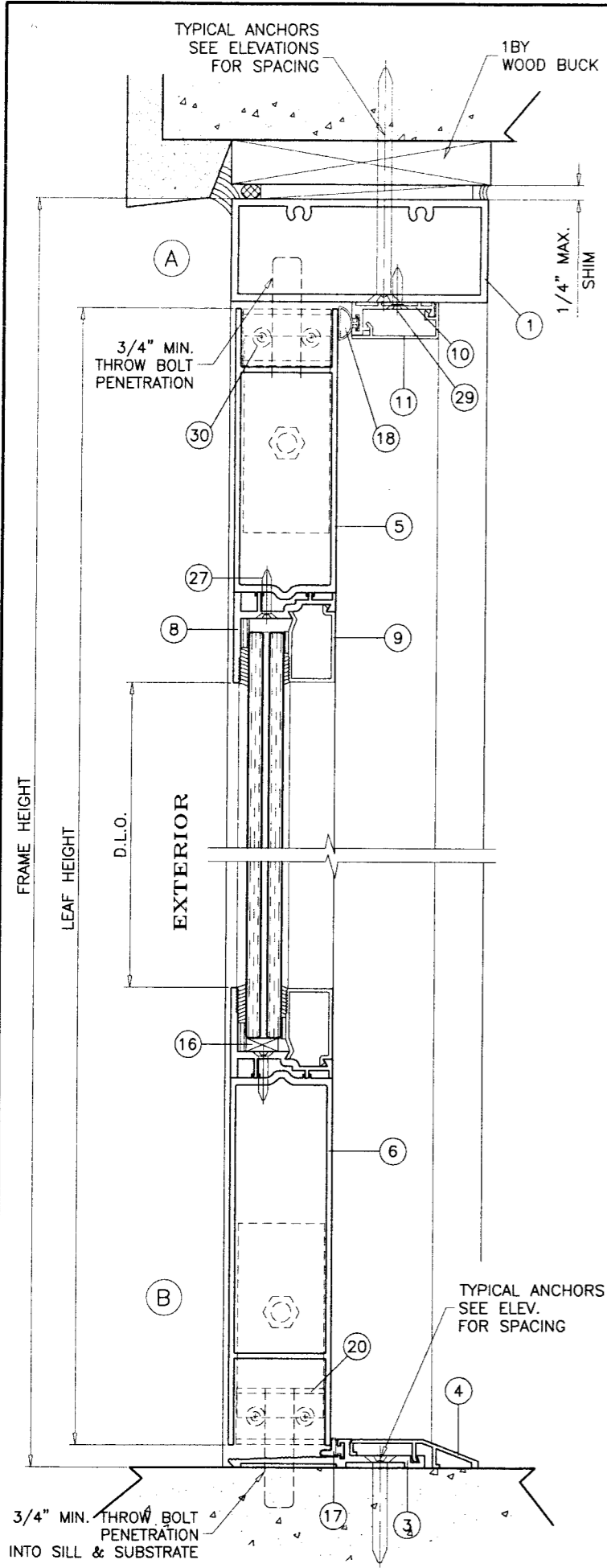
SMK-2/K-2 BREEZE ALUM ENTRANCE DOOR (L.M.I.)
SMITH MOUNTAIN IMPACT SYSTEMS
11305 N.W. 128 STREET
MEDLEY, FL. 33178
TEL. (305) 888-6288 FAX. (305) 888-6289

no	date	description
A	03.05.08	UPDATED FOR 2004 FBC
B	06.10.08	REV. PER BCCO COMMENTS
C	02.10.09	ALT. GLAZING DETAIL ADDED

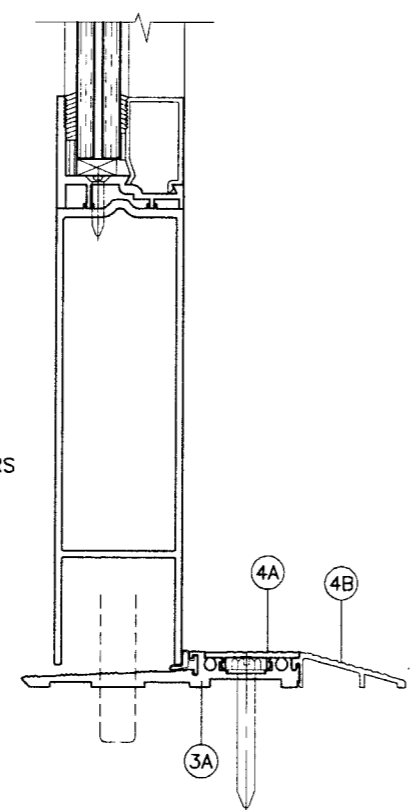
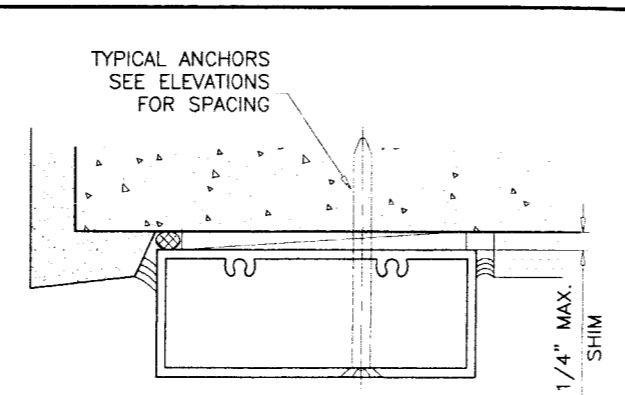
date: 08-07-03
scale: 1/2" = 1'-0"
dr. by: HAMID
chk. by:

drawing no.
W03-62

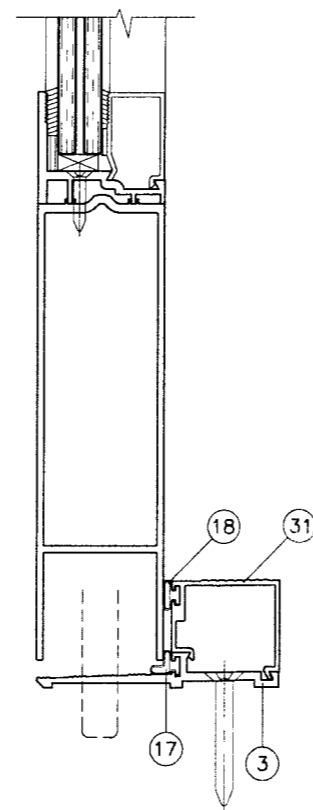
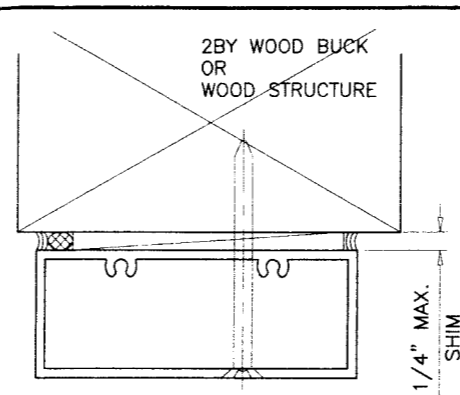
sheet 1 of 7



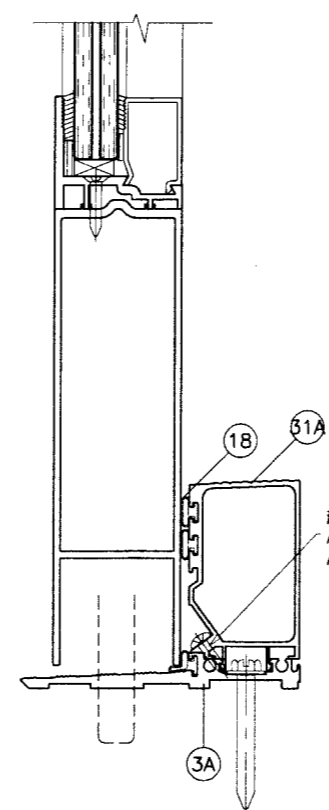
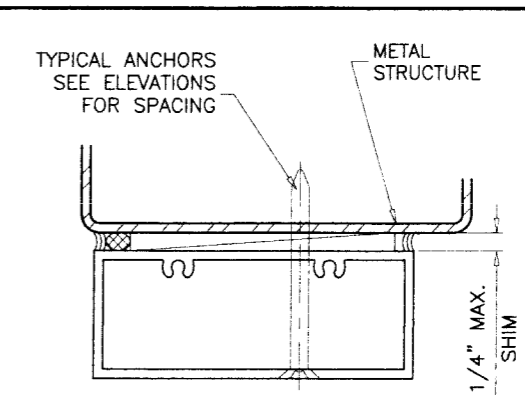
ADA BUMPER THRESHOLD



ALT. ADA BUMPER THRESHOLD



HI-RISE THRESHOLD



ALT. HI-RISE THRESHOLD

WOOD BUCKS AND METAL STRUCTURE NOT BY SMITH MOUNTAIN MUST SUSTAIN LOADS IMPOSED BY GLAZING SYSTEM AND TRANSFER THEM TO THE BUILDING STRUCTURE.

TYPICAL ANCHORS: SEE ELEV. FOR SPACING
1/4" TAPCONS BY 'ELCO'
 INTO 2BY WOOD BUCKS OR WOOD STRUCTURES
 1-1/2" MIN. PENETRATION INTO WOOD
 THRU 1BY BUCKS INTO CONC. OR MASONRY
 1-1/4" MIN. EMBED INTO CONC. OR MASONRY
 DIRECTLY INTO CONC. OR MASONRY
 1-1/4" MIN. EMBED INTO CONC. OR MASONRY
1/4" DIA. TEKS/DRIL-FLEX SELF DRILLING SCREWS (GRADE 5)
 INTO METAL STRUCTURES
 STEEL : 12 GA. MIN. (Fy = 36 KSI MIN.)
 ALUMINUM : 1/8" THK. MIN. (6063-T5 MIN.)
 (STEEL IN CONTACT WITH ALUMINUM TO BE PLATED OR PAINTED)

ANCHOR EDGE DISTANCES:
 INTO CONCRETE AND MASONRY = 2" MIN.
 INTO WOOD STRUCTURE = 1" MIN.
 INTO METAL STRUCTURE = 3/4" MIN.

PRODUCT REVISED
 as complying with the Florida Building Code
 Acceptance No. 09-0223.04
 Expiration Date DEC 04, 2013
 By Ismag I. Chande
 Miami Dade Product Control Division

Engr: DR. HUMAYOUN FAROOQ
 STRUCTURES
 FLA. PE # 16557
 C.A.N. 3538

FEB 18 2009

af c
AL-FAROOQ CORPORATION
 ENGINEERS & PRODUCT DEVELOPMENT
 1235 S.W. 87 AVE
 MIAMI, FLORIDA 33174
 TEL. (305) 264-8100 FAX. (305) 262-6978
 COMP-ANL\W03-62SM

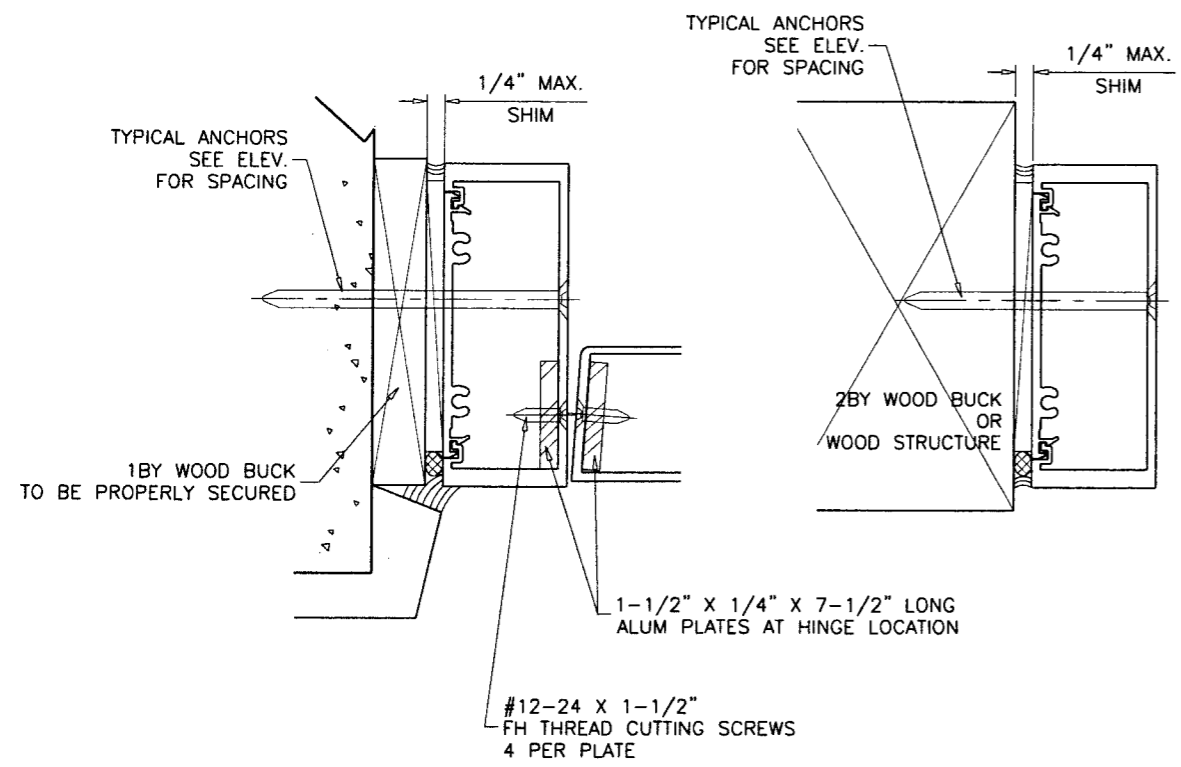
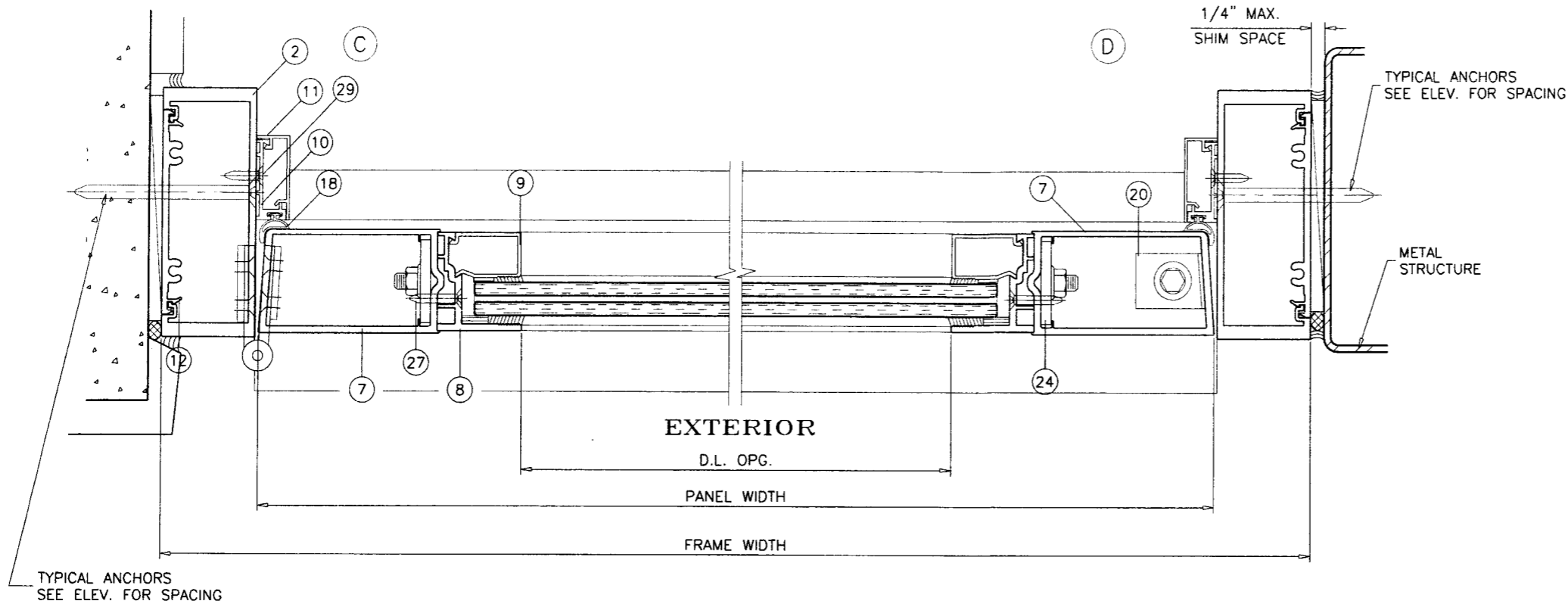
SMK-2/K-2 BREEZE ALUM ENTRANCE DOOR (L.M.I.)
SMITH MOUNTAIN IMPACT SYSTEMS
 11,305 N.W. 128 STREET
 MEDLEY, FL. 33178
 TEL. (305) 888-6288 FAX. (305) 888-6289

no.	date	by	description
A	03.05.08		UPDATED FOR 2004 FBC
B	06.10.08		NO CHANGE THIS SHEET
C	02.10.09		NO CHANGE THIS SHEET

revisions:

date: 08-07-03
 scale: 3/8" = 1"
 dr. by: HAMID
 chk. by:

drawing no. **W03-62**
 sheet 2 of 7



PRODUCT REVISED
 as complying with the Florida
 Building Code
 Acceptance No 09-0223.09
 Expiration Date DEC 04, 2013
 By Ishaq I. Chaudhry
 Miami Dade Product Control
 Division

Engr: DR. HUMAYOON FAROOQ
 STRUCTURES
 FLA. PE # 16557
 C.A.N. 3538
 FEB 18 2009

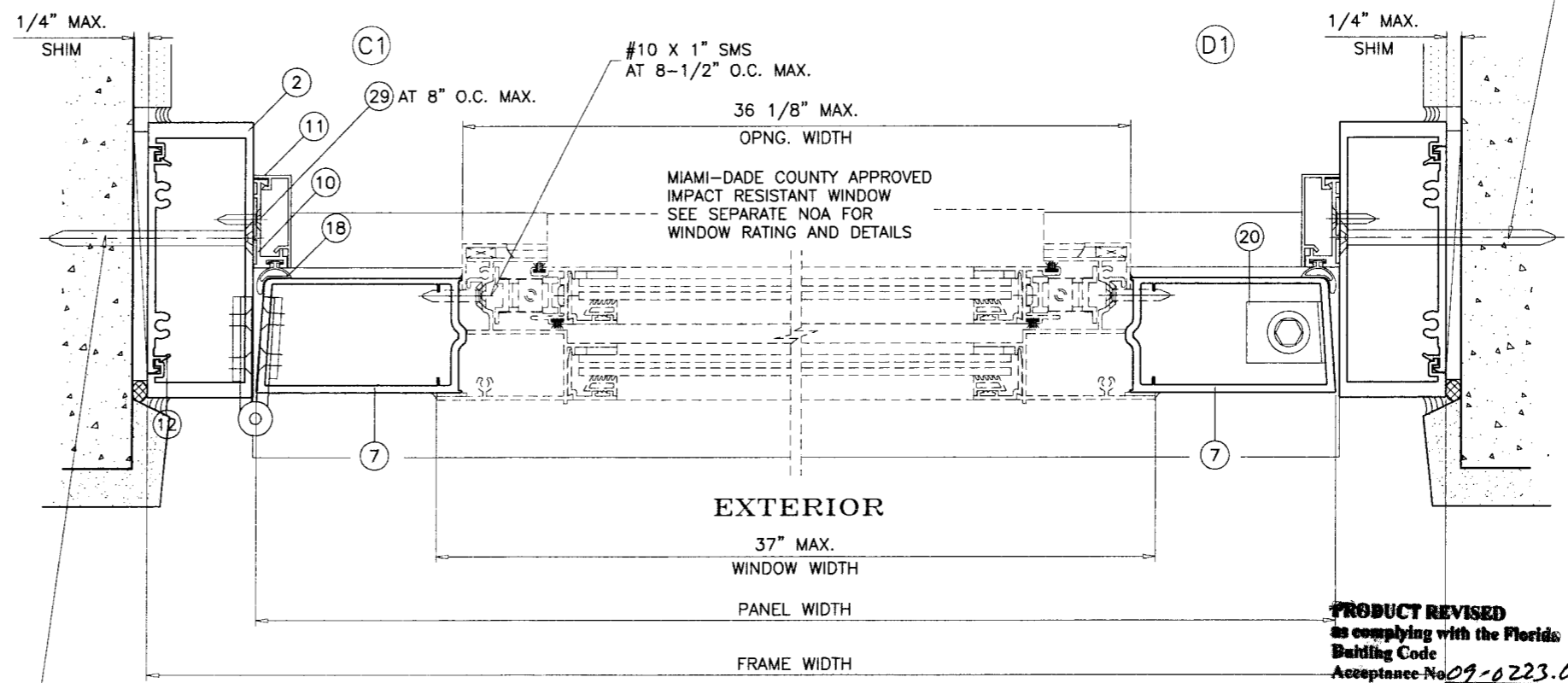
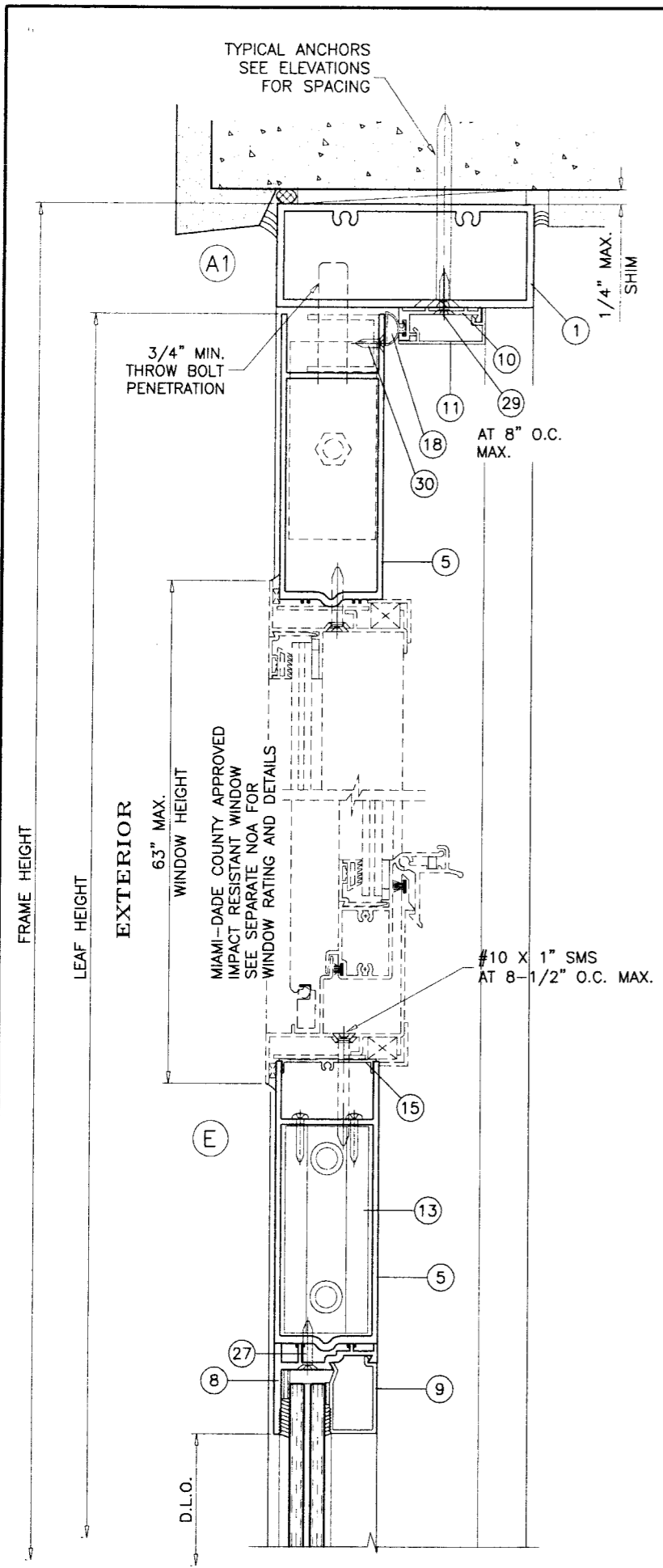
afc
AL-FAROOQ CORPORATION
 ENGINEERS & PRODUCT DEVELOPMENT
 1235 S.W. 87 AVE
 MIAMI, FLORIDA 33174
 TEL. (305) 264-8100 FAX. (305) 262-6978
 COMP-ANL\W03-62SM

SMK-2/K-2 BREEZE ALUM ENTRANCE DOOR (L.M.I.)
SMITH MOUNTAIN IMPACT SYSTEMS
 11305 N.W. 128 STREET
 MEDLEY, FL. 33178
 TEL. (305) 888-6288 FAX. (305) 888-6289

no	date	description
A	03.05.08	UPDATED FOR 2004 FBC
B	06.10.08	REV. PER BCCO COMMENTS
C	02.10.09	DETAIL ADDED

date: 08-07-03
 scale: 3/8" = 1"
 dr. by: HAMID
 chk. by:

drawing no.
W03-62
 sheet 3 of 7



PRODUCT REVISED
 as complying with the Florida
 Building Code
 Acceptance No. 09-0223.09
 Expiration Date Dec 04, 2013
 By Ishag I. Chaudhry
 Miami Dade Product Control
 Division

Engr: DR. HUMAYOON FAROOQ
 STRUCTURES
 FLA. PE # 16557
 C.A.N. 3538

[Handwritten Signature]

FEB 18 2009

af c
AL-FAROOQ CORPORATION
 ENGINEERS & PRODUCT DEVELOPMENT
 1235 S.W. 87 AVE
 MIAMI, FLORIDA 33174
 TEL. (305) 264-8100 FAX. (305) 262-6978
 COMP-ANL\W03-62SM

SMK-2/K-2 BREEZE ALUM ENTRANCE DOOR (L.M.I.)
SMITH MOUNTAIN IMPACT SYSTEMS
 11305 N.W. 128 STREET
 MEDLEY, FL. 33178
 TEL. (305) 888-6288 FAX. (305) 888-6289

no.	date	description
A	03.05.08	UPDATED FOR 2004 FBC
B	06.10.08	REV. PER BCCO COMMENTS
C	02.10.09	NO CHANGE THIS SHEET

date: 08-07-03
 scale: 3/8" = 1"
 dr. by: HAMID
 chk. by:

drawing no.
W03-62
 sheet 4 of 7

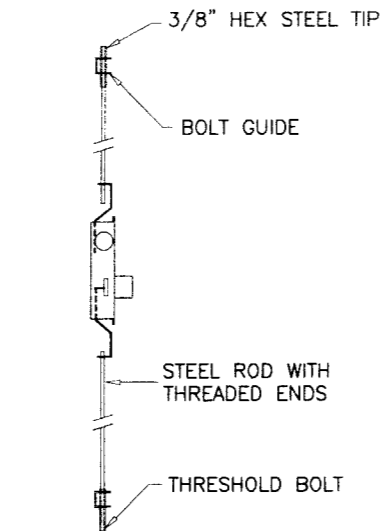
SEALANTS:

ALL FRAME AND LEAF CORNERS AND INSTALLATION SCREWS SEALED WITH SILICONE.
PERIMETER OF WINDOW FRAME TO DOOR LEAF AT EXTERIOR AND INTERIOR SEALED WITH SILICONE.

LOCKS:

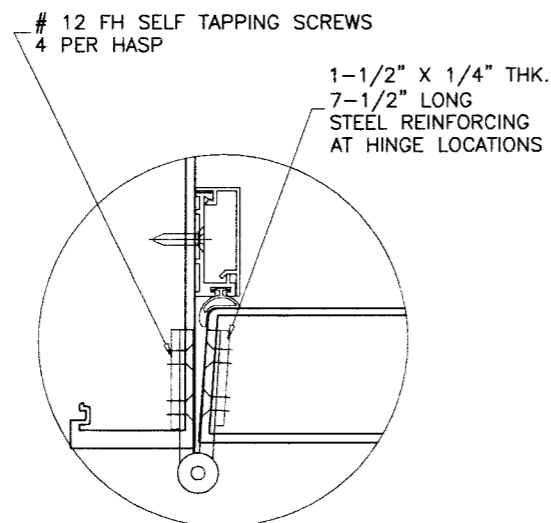
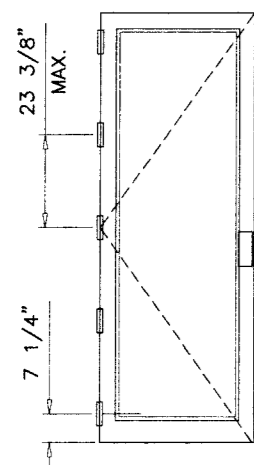
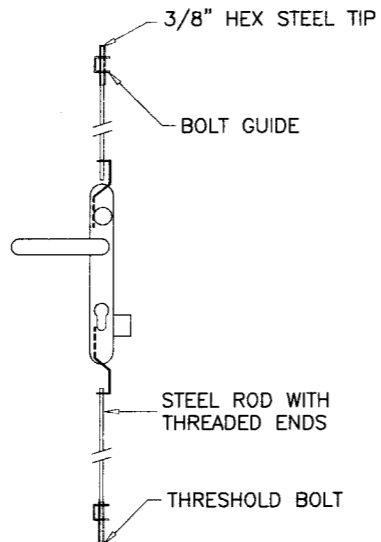
OPTION 1:

THREE POINT LOCK SYSTEM WITH 5 PLY HOOK LOCK BOLT REGENT 2222, KEY OPERATED ON EXTERIOR AND THUMB-TURN ON INTERIOR, LOCATED AT 34" FROM BOTTOM OF PANEL



OPTION 2:

THREE POINT LOCK SYSTEM WITH 4 PLY HOOK LOCK REGENT NO. 206-3P, KEY OPERATED ON EXTERIOR AND THUMB-TURN ON INTERIOR, LOCATED AT 36" FROM BOTTOM OF PANEL



4-1/2" ST./ST. BUTT HINGES
REGENT #4002

ITEM #	PART #	REQD.	DESCRIPTION	MATERIAL	MANF./SUPPLIER/REMARKS
1	SMI-006	1	FRAME HEAD	6063-T6	-
2	SMI-005	2	FRAME JAMB	6063-T6	-
3	SMI-023	1	BUMPER THRESHOLD	6063-T6	-
3A	SMI-036	1	ALT. BUMPER THRESHOLD	6063-T6	-
4	SMI-024	1	ADA THRESHOLD COVER	6063-T6	-
4A	SMI-038	1	ALT. ADA THRESHOLD COVER	6063-T6	-
4B	SMI-037	1	ALT. ADA THRESHOLD COVER	6063-T6	-
5	SMI-012	1/ LEAF	TOP RAIL/MID RAIL	6063-T6	-
6	SMI-013	1/ LEAF	BOTTOM RAIL	6063-T6	-
7	SMI-011	1/ LEAF	DOOR STILE	6063-T6	-
8	SMI-008	4/ LEAF	EXTERIOR GLASS STOP (DOOR)	6063-T6	-
9	SMI-007	4/ LEAF	INTERIOR GLASS STOP (DOOR)	6063-T6	-
10	SMI-014	3/ DOOR	DOOR STOP BASE	6063-T6	-
11	SMI-015	3/ DOOR	DOOR STOP COVER	6063-T6	-
12	SMI-004	1/ ANCHOR	FLAT FILLER, 3" LONG	6063-T6	-
13	SMI-105	2	SHEAR BLOCK	6063-T6	-
14	SMI-G04	AS REQD.	GLAZING TAPE	FOAM	FRANK LOWE
14A	SMI-G05	AS REQD.	GLAZING TAPE	FOAM	FRANK LOWE
14B	SMI-G11	AS REQD.	ALT. GLAZING TAPE (3/16" X 5/16")	FOAM	FRANK LOWE
14C	SMI-G12	AS REQD.	ALT. GLAZING TAPE (1/8" X 5/16")	FOAM	FRANK LOWE
15	SMI-033	3	FALSE MUNTIN BASE	6063-T6	-
16	SMI-G03	AS REQD.	SETTING BLOCK (3/8" X 1/4" X 1/2" LONG)	-	FRANK LOWE
17	E20510K	AS REQD.	BULB W'STRIPPING	VINYL	ULTRAFAB
18	E23610K	AS REQD.	BULB W'STRIPPING WITH FLAP	VINYL	ULTRAFAB
19	-	2/ LEAF	3/8" THREADED ROD WITH NUT	STEEL	-
20	-	2/ LEAF	FLUSH BOLT GUIDE	ST. STEEL	-
21	-	AS REQD.	PUSH BAR	-	-
22	-	AS REQD.	PULL HANDLE	-	-
23	-	2	THRESHOLD CLIP	ALUMINUM	2" X 2" X 1/8" X 1" LONG
24	-	4/ LEAF	SUPPORT PLATE (1-1/4" X 2" X 1/8")	ALUMINUM	-
26	#12 X 1-1/2"	2/ CORNER	FRAME ASSEMBLY SCREWS	-	HEX H SELF DRILLING
27	#10 X 1"	AS REQD.	GLASS STOP SCREWS AT 4-1/2" O.C. MAX.	-	FH SMS
28	#10 X 1/2"	AS REQD.	THRESHOLD CLIP SCREWS	-	FH SELF DRILLING
29	#8 X 3/4"	AS REQD.	DOOR STOP SCREWS AT 8" O.C. MAX.	-	FH SMS
30	#10 X 5/16"	2/ GUIDE	GUIDE INSTALLATION SCREWS	-	FH MS
31	SMI-025	1	HI-RISE RHRESHOLD COVER	6063-T6	-
31A	SMI-039	1	ALT. HI-RISE RHRESHOLD COVER	6063-T6	-

PRODUCT REVISED
as complying with the Florida
Building Code
Acceptance No 09-0223-09
Expiration Date DEC 04, 2013
By Ishag I. Chank
Miami Dade Product Control
Division

Engr: DR. HUMAYOUN FAROOQ
STRUCTURES
FLA. PE # 16557
C.A.N. 3538

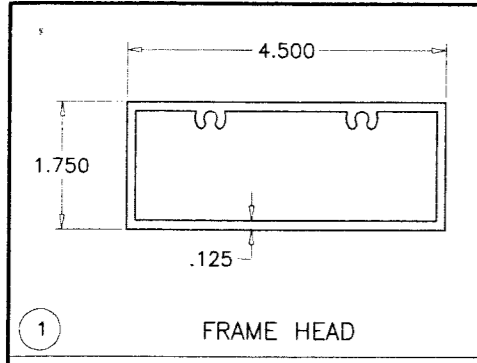
FEB 18 2009

AL-FAROOQ CORPORATION
ENGINEERS & PRODUCT DEVELOPMENT
1235 S.W. 87 AVE
MIAMI, FLORIDA 33174
TEL. (305) 264-8100 FAX. (305) 262-6978
COMP-ANL\W03-62SM

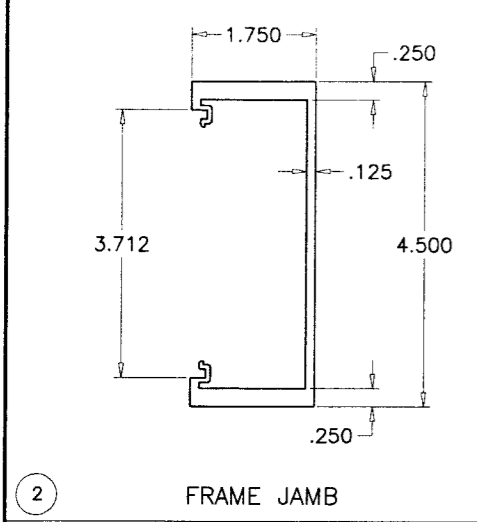
SMK-2/K-2 BREEZE ALUM ENTRANCE DOOR (L.M.I.)
SMITH MOUNTAIN IMPACT SYSTEMS
11305 N.W. 128 STREET
MEDLEY, FL. 33178
TEL. (305) 888-6288 FAX. (305) 888-6289

no	date	description
A	03.05.08	UPDATED FOR 2004 FBC
B	06.10.08	REV. PER BCCO COMMENTS
C	02.10.09	ALT. GLAZING DETAIL ADDED

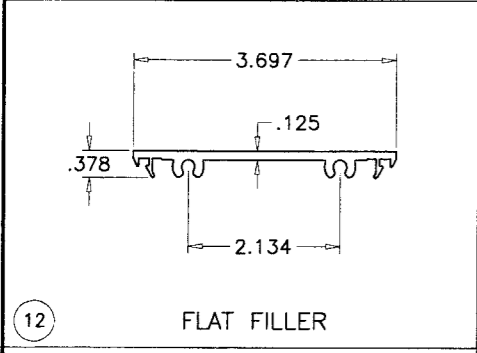
date: 08-07-03
scale: 3/8" = 1"
dr. by: HAMID
chk. by:
drawing no.
W03-62
sheet 5 of 7



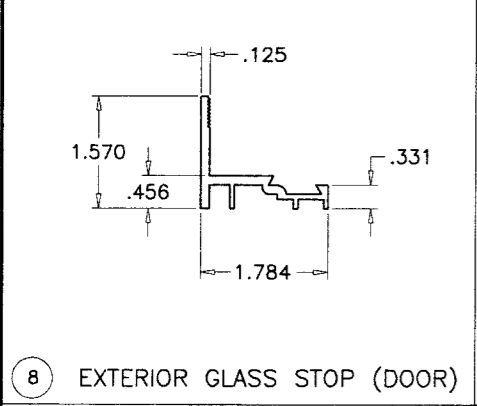
1 FRAME HEAD



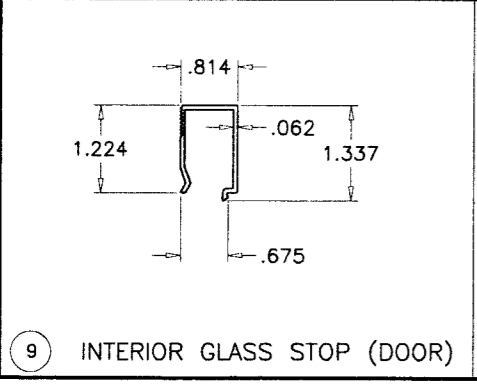
2 FRAME JAMB



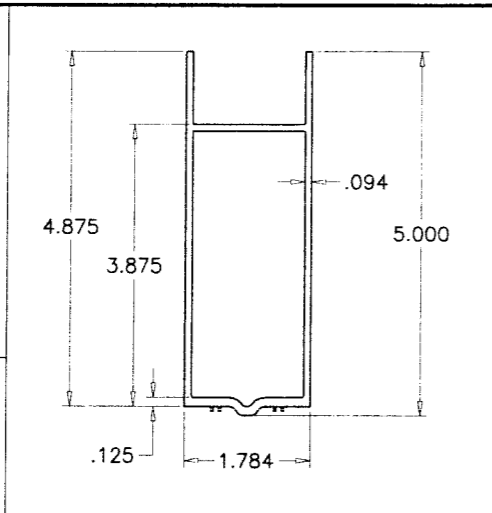
12 FLAT FILLER



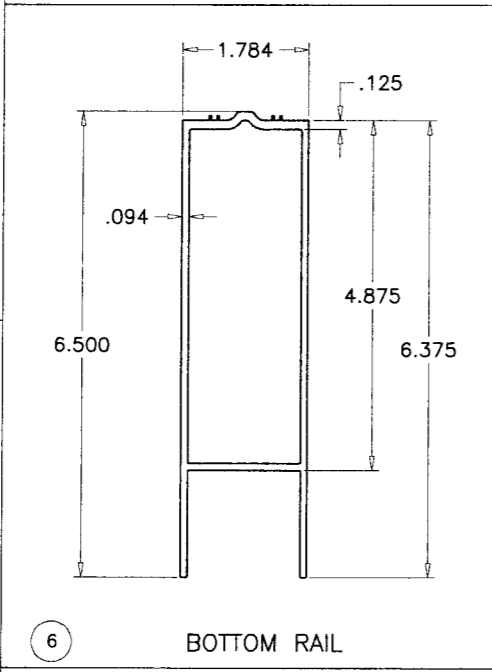
8 EXTERIOR GLASS STOP (DOOR)



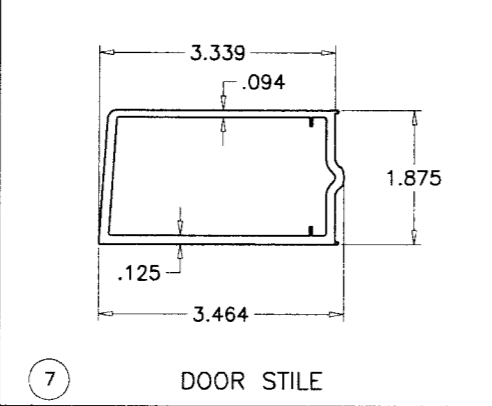
9 INTERIOR GLASS STOP (DOOR)



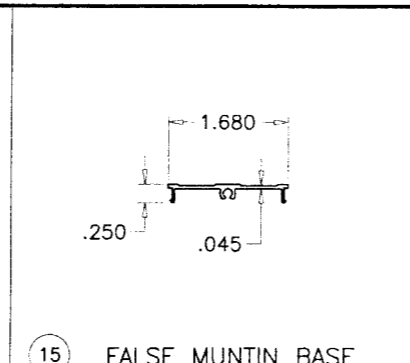
5 TOP RAIL/MID RAIL



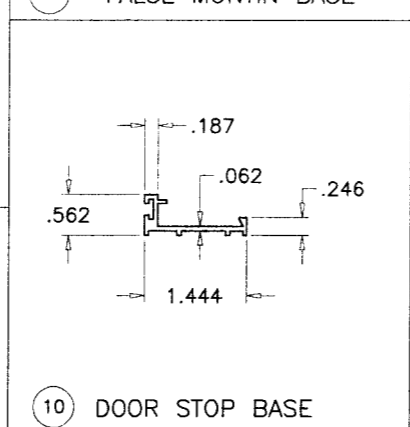
6 BOTTOM RAIL



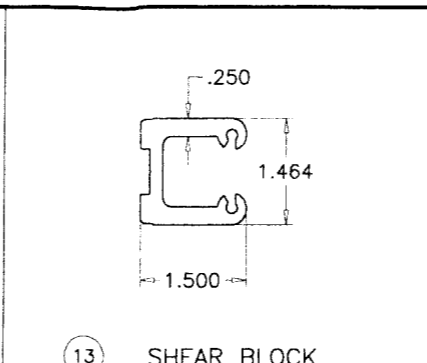
7 DOOR STILE



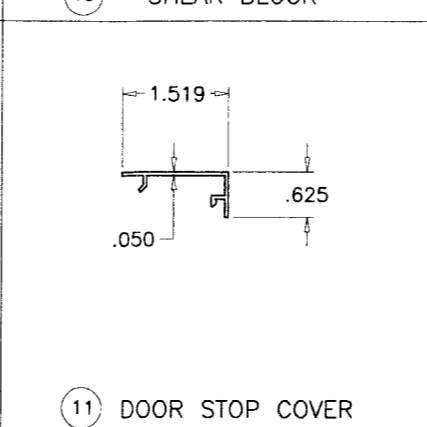
15 FALSE MUNTIN BASE



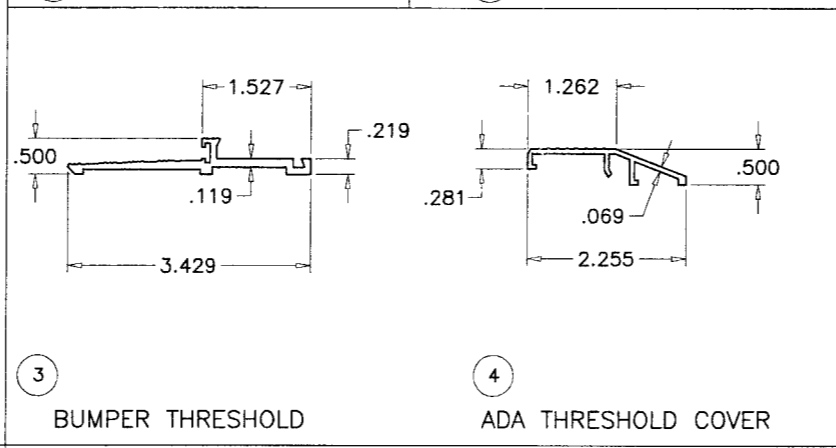
10 DOOR STOP BASE



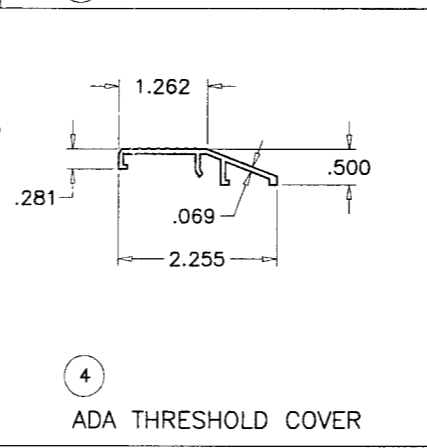
13 SHEAR BLOCK



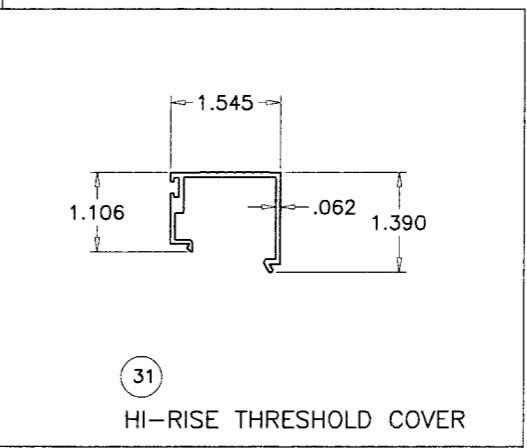
11 DOOR STOP COVER



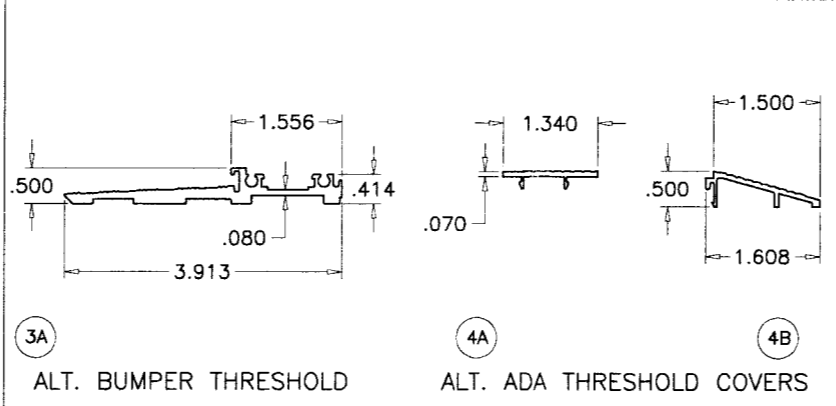
3 BUMPER THRESHOLD



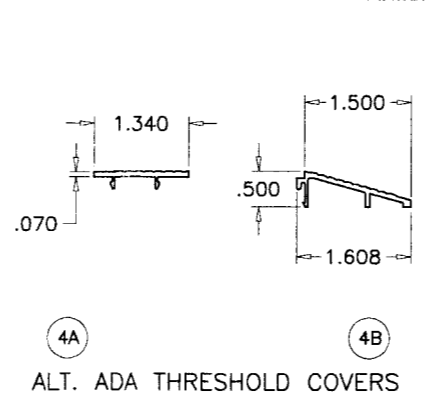
4 ADA THRESHOLD COVER



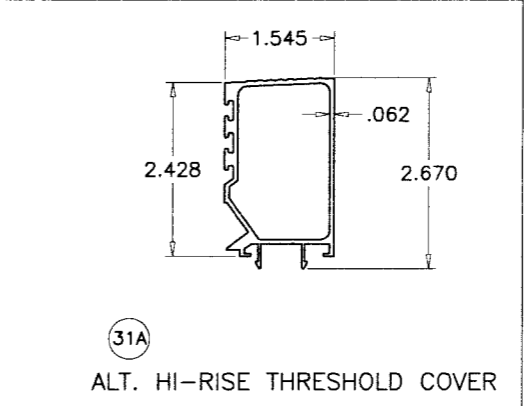
31 HI-RISE THRESHOLD COVER



3A ALT. BUMPER THRESHOLD



4A ALT. ADA THRESHOLD COVERS
4B



31A ALT. HI-RISE THRESHOLD COVER

Engr. DR. HUMAYOON FAROOQ
STRUCTURES
FLA. PE # 16557
C.A.N. 3538

[Signature]
FEB 18 2009

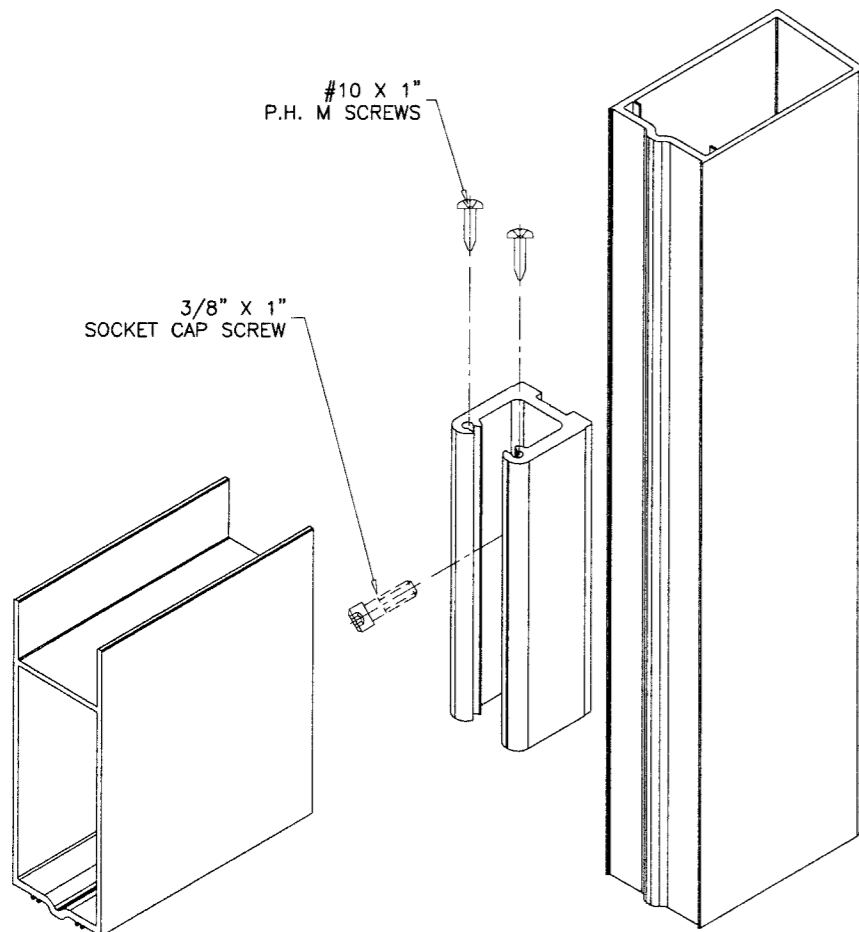
PRODUCT REVISED
as complying with the Florida
Building Code
Acceptance No 09-0223-09
Expiration Date Dec 04, 2013
By Ishag I. Chande
Miami Dade Product Control
Division

afC
AL-FAROOQ CORPORATION
ENGINEERS & PRODUCT DEVELOPMENT
1235 S.W. 87 AVE
MIAMI, FLORIDA 33174
TEL. (305) 264-8100 FAX. (305) 262-6978
COMP-ANL\W03-62SM

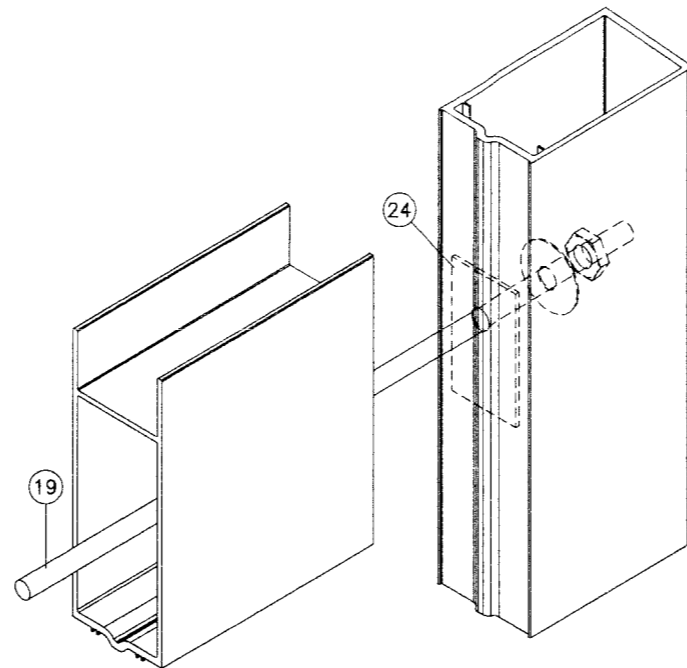
SMK-2/K-2 BREEZE ALUM ENTRANCE DOOR (L.M.I.)
SMITH MOUNTAIN IMPACT SYSTEMS
11305 N.W. 128 STREET
MEDLEY, FL. 33178
TEL. (305) 888-6288 FAX. (305) 888-6289

no	date	by	description
A	03.05.06		UPDATED FOR 2004 FBC
B	06.10.08		NO CHANGE THIS SHEET
C	02.10.09		NO CHANGE THIS SHEET

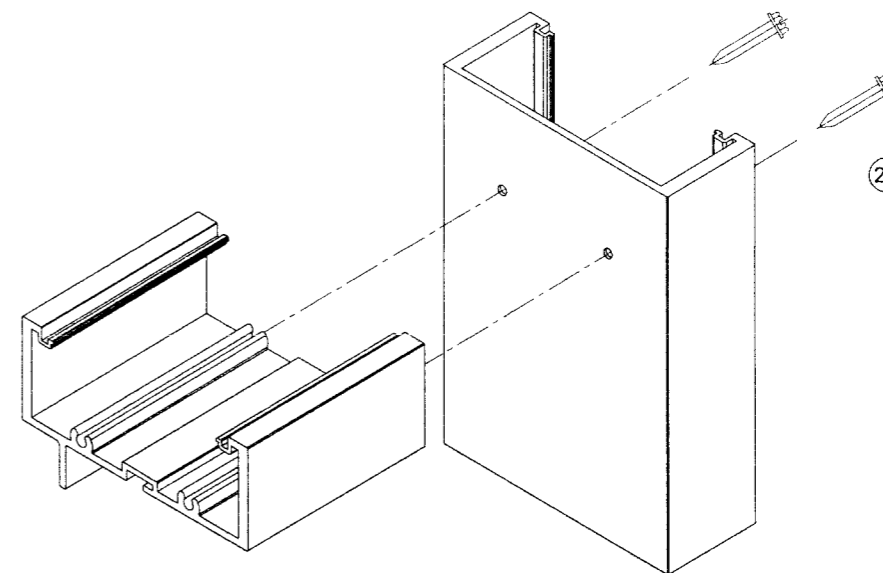
date: 08-07-03
scale: 3/8" = 1"
dr. by: HAMID
chk. by:
drawing no.
W03-62
sheet 6 of 7



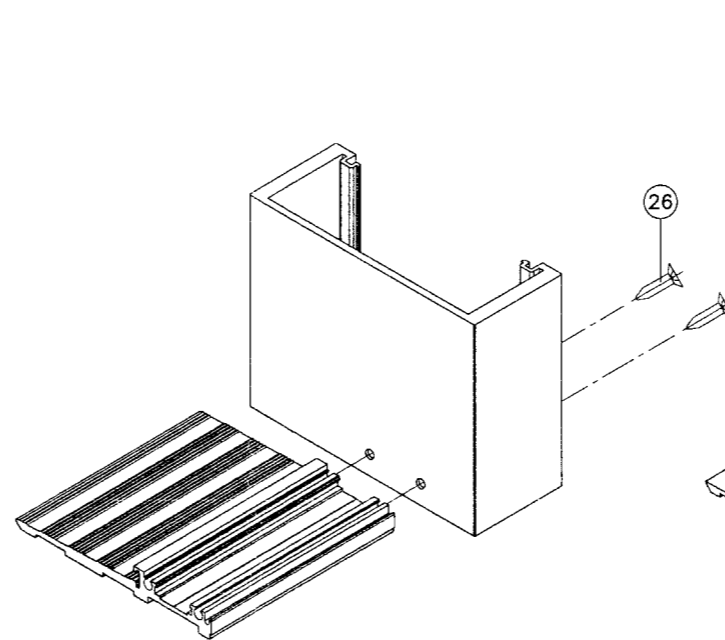
MID RAIL CORNER



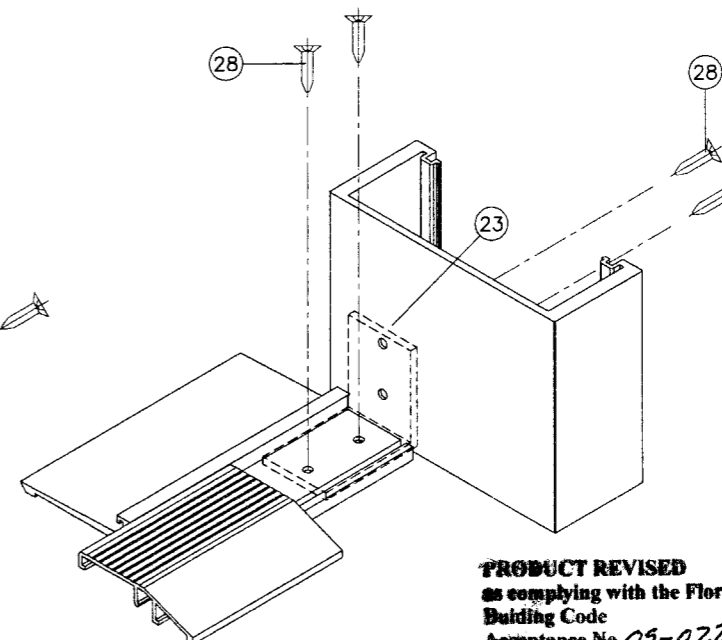
DOOR LEAF CORNER



FRAME TOP CORNER



FRAME BOTTOM CORNER



PRODUCT REVISED
 as complying with the Florida
 Building Code
 Acceptance No. 09-0223-09
 Expiration Date DEC 04, 2013
 By Ishag I. Chande
 Miami Dade Product Control
 Division

Engr: DR. HUMAYOON FAROOQ
 STRUCTURIPES
 FLA. PE # 18557
 C.A.N. 3538

[Signature]
 FEB 18 2009

af c
AL-FAROOQ CORPORATION
 ENGINEERS & PRODUCT DEVELOPMENT
 1235 S.W. 87 AVE
 MIAMI, FLORIDA 33174
 TEL. (305) 264-8100 FAX. (305) 262-6978
 COMP-ANL\W03-62SM

SMK-2/K-2 BREEZE ALUM ENTRANCE DOOR (L.M.I.)
SMITH MOUNTAIN IMPACT SYSTEMS
 11305 N.W. 128 STREET
 MEDLEY, FL. 33178
 TEL. (305) 888-6288 FAX. (305) 888-6289

no.	date	by	description
A	03.05.08		UPDATED FOR 2004 FBC
B	06.10.08		REV. PER BCCO COMMENTS
C	02.10.09		NO CHANGE THIS SHEET

date: 08-07-03
 scale: 3/8" = 1"
 dr. by: HAMID
 chk. by:

drawing no.
W03-62
 sheet 7 of 7